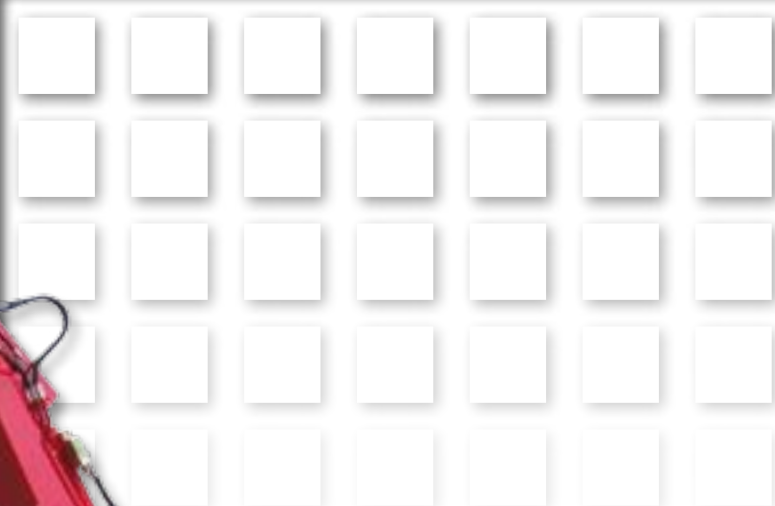


**OFFICINE  
MINELLI**



**CM 160 S**



**OPERATING WEIGHT**

16 - 17 Tons

**ENGINE POWER**

74 kW (100 CV)

## ENGINE

Max power	74 Kw (100 CV) @2300rpm
Cylinders	4 cylinders in line
Power supply	Direct injection turbo diesel
Intake	Two stage air filter
Emissions	In line with EC 97/68 phase 3 EPA NON-ROAD Tier III
Noise level	(EC 2000/14 directive) L <sub>W_A</sub> = 97.8 dB

## HYDRAULIC SYSTEM

Hydraulic pump	Microprocessor controlled Linde with variable flow rate and axial pistons
Max flow rate	240 l/min
Distributor	Linde LS single block proportional 6 component
Operating pressure	330 bars
Operation	Linde Load Sensing operating system Synchron control for synchronised movements without reciprocal influence Special turret rotation motor with independent torque control
Electronic control system	Electronic accelerator, movement speed regulator and auto-idle

## TURRET ROTATION

Hydraulic motor	Axial piston with LS control section and integrated valves
Rotation speed	0-8 rpm, progressive start-up and controlled braking
Reduction	Gear group with tempered gears
Rail bearing	Rail A bearing with steel alloy internal teeth, diameter 1160 mm

## TRANSMISSION

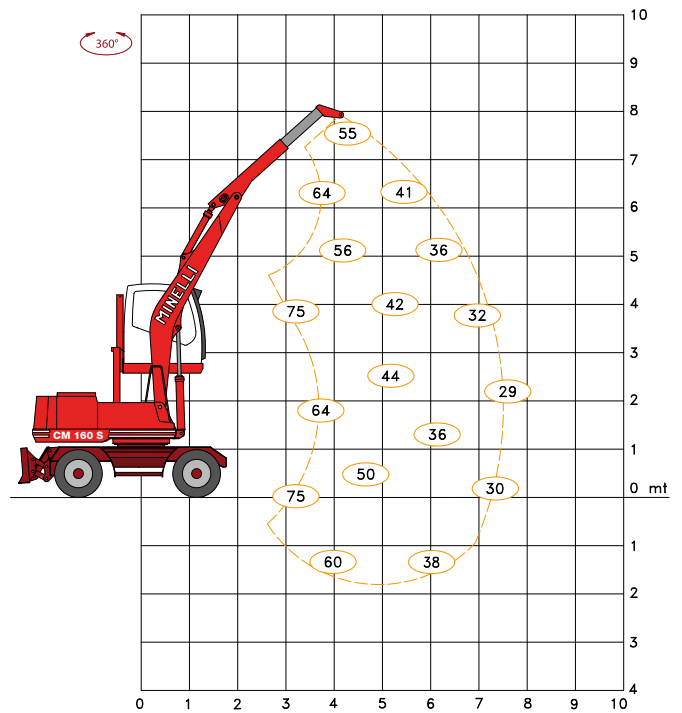
Hydraulic motor	Axial piston (max flow rate 125 l/min)
Transverse movement speed	0-6 km/h in 1 <sup>st</sup> gear; 0-16 km/h in 2 <sup>nd</sup> gear
Gearbox	Two speed, electric drive manual gearbox
Assali	Static 22 ton capacity axles with epicyclic reducer gears in the hubs. Oscillating front axle with electrical locking system
Wheels	8 wheels with super elastic "Loader" tyres, 9.00x20 on 6.5" HD rims

## ARMS

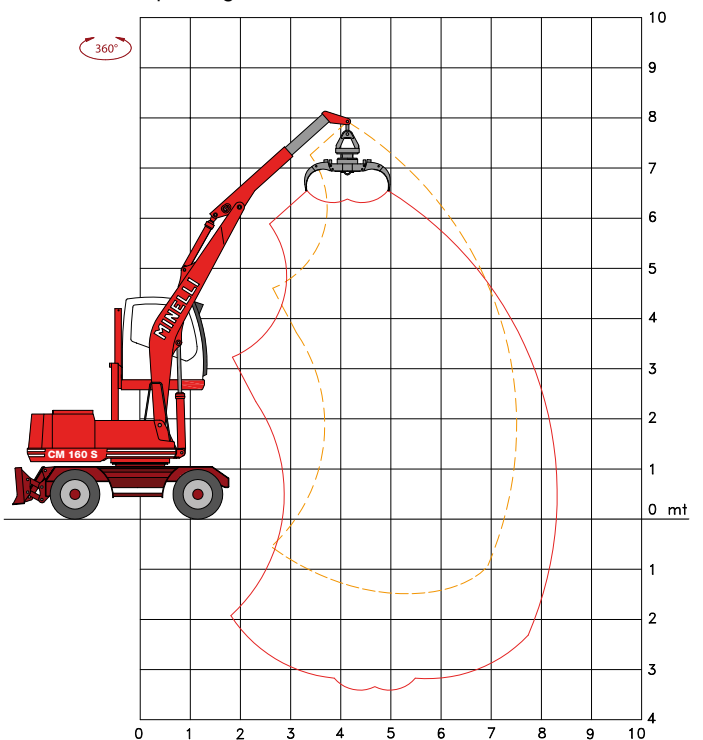
Total span	7500 mm
Operating range	8500 m
Arm I°	4630 mm
Arm II°	With hydraulic extension (1800 to 2800 mm)

Officine Minelli reserves the right to make any changes it considers appropriate for the improved running of the machine without notice. The information is subject to modification without notice.

Load capacity (kN)



Operating area



## STANDARD SERIES EQUIPMENT

- Vertical lifting cabin (max height 4.50 m), roll bar grille, spotlights and parasol canopy
- Three speed fan heating system
- Centralised manual greasing unit
- Low maintenance broad mesh heat exchangers
- Front-mounted hydraulic blade

## OPTIONAL EQUIPMENT

- Air conditioning unit with intake micro-filter, radio with MP3 player, seat with pneumatic suspension
- Automatic greasing unit for turret and arms
- Vortex intake pre-filter
- Hydraulic rear legs
- Dual traction
- Rubber spacer rings between the wheels
- Electromagnet system and plate
- Various tools available in line with requirements