



CM 210 SL



OPERATING WEIGHT

22 - 23 Tons

ENGINE POWER

140 kW (189 CV)

ENGINE

| | |
|--------------|--|
| Max power | 140 Kw (189 CV) @2300rpm |
| Cylinders | 6 cylinders in line |
| Power supply | Direct injection turbo diesel with intercooler |
| Intake | Two stage air filter |
| Emissions | In line with EC 97/68 phase 3 EPA NON-ROAD Tier III |
| Noise level | (EC 2000/14 directive) $L_{wA} = 102$ dB |

HYDRAULIC SYSTEM

| | |
|---------------------------|---|
| Hydraulic pump | Microprocessor controlled Linde with variable flow rate and axial pistons |
| Max flow rate | 310 l/min |
| Distributor | Linde LS single block proportional 6 component distributor |
| Operating pressure | 330 bars |
| Operation | Linde Load Sensing operating system Synchron control for synchronised movements without reciprocal influence Special turret rotation motor with independent torque contro |
| Electronic control system | Electronic accelerator, movement speed regulator and auto-idle |

TURRET ROTATION

| | |
|-----------------|--|
| Hydraulic motor | Axial piston with LS control section and integrated valves |
| Rotation speed | 0-8 rpm, progressive start-up and controlled braking |
| Reduction | Two stage reduction gear group with tempered gears |
| Rail bearing | Rail A bearing with steel alloy internal teeth, diameter 1200 mm |

TRANSMISSION

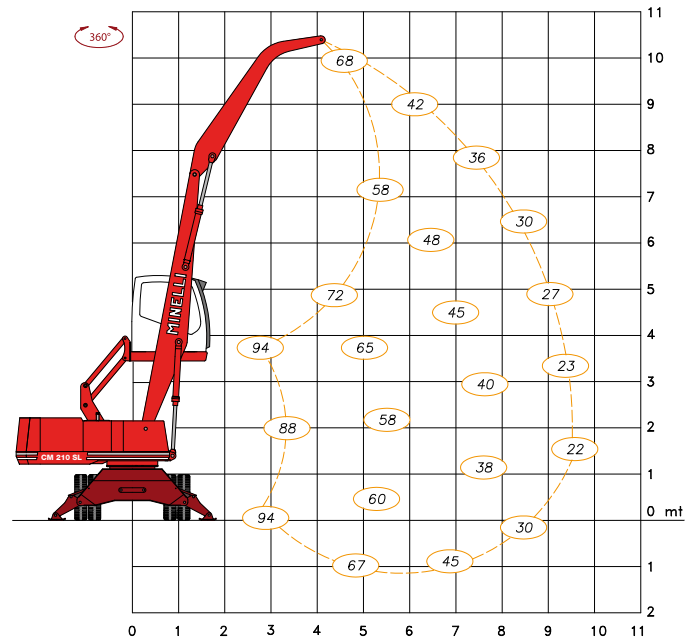
| | |
|---------------------------|---|
| Hydraulic motor | Axial piston with variable flow rate (max flow rate 180 l/min) |
| Transverse movement speed | 0-6 km/h in 1 st gear; 0-18 km/h in 2 nd gear |
| Gearbox | Two speed, electric drive manual gearbox |
| Assali | Static 28 ton capacity axles with epicyclical reducer gears in the hubs. Oscillating front axle with electrical locking system |
| Wheels | 8 wheels with super elastic "Loader" tyres, 10.00x20 on 8.0" HD rims |

ARMS

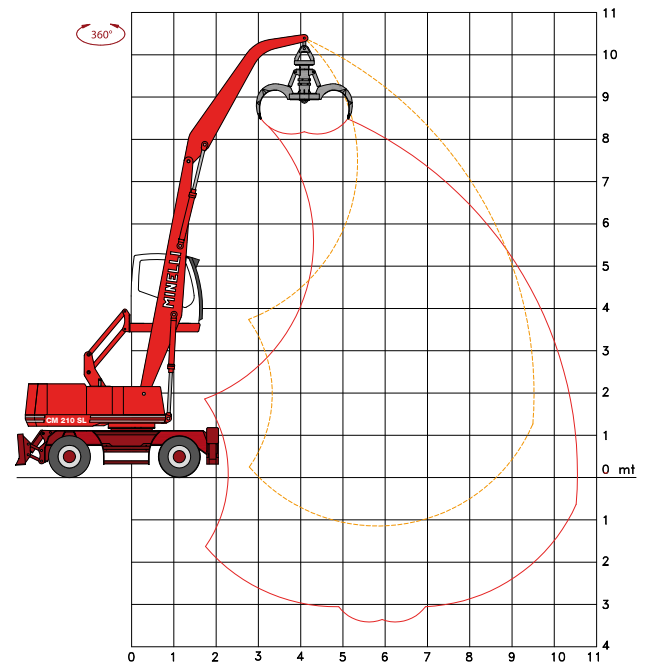
| | |
|-----------------|---------------------------------------|
| Total span | 9600 mm |
| Operating range | 10500 mm |
| Arm I° | 5600 mm, two cylinder drive |
| Arm II° | 4000 mm monoblock, two cylinder drive |

Officine Minelli reserves the right to make any changes it considers appropriate for the improved running of the machine without notice. The information is subject to modification without notice.

Stabilised machine load capacity (kN)



Operating area



STANDARD SERIES EQUIPMENT

- Pantograph cabin lift (max height 5,40 m), roll bar grille, spotlights and parasol canopy
- Air conditioning unit with intake micro-filter
- Three speed fan heating system
- Automatic greasing unit for turret and arms
- Low maintenance broad mesh heat exchangers
- Front-mounted hydraulic blade with two cylinders
- Hydraulic rear legs
- Dual traction

OPTIONAL EQUIPMENT

- Radio with MP3 player
- Seat with pneumatic suspension
- Vortex intake pre-filter
- Rubber spacer rings between the wheels
- Electromagnet system and plate
- Various tools available in line with requirements